

**COLOR YOUR SPACE**

**COLORLINE**







## COLORLINE COLLECTION

Innovflor

Relaxing grey tones as the basic, that allow you to connect spaces and create bespoke areas. Color is key combinations and transitions effortlessly in the Colorline Collection, colors adorn them to add vibrancy to the whole environment. Available in office building , commercial areas.

*Color your space*











At Innovflor,  
detail is every-  
thing. Any-  
thing only to  
do 100% is  
qualified, 99  
points are not  
qualified.









**Creativity seems to emerge from multiple experiences. —**





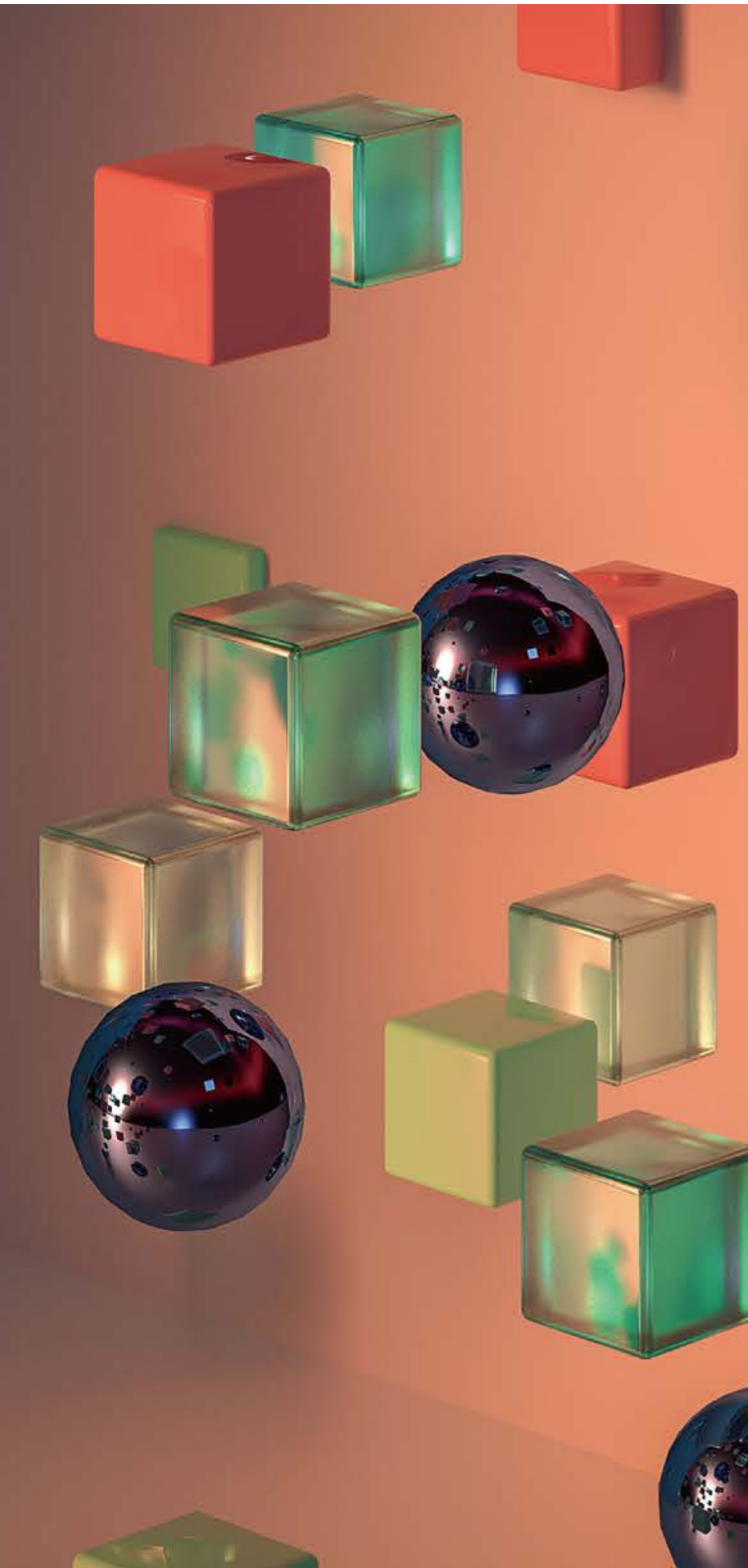
**FASHION PERISHABLE,  
STYLE IS FOREVER.**















**TEAM  
WORK  
MAKES  
THE  
DREAM  
WORK.**





**COLORLINE**

**SPECIFICATION:**

Face yarn:	100% Nylon
Dye method:	100% Solution dyed
Gauge:	1/12
Pile weight:	560g/m <sup>2</sup> (± 5%)
Total weight:	5000g/m <sup>2</sup> (± 5%)
Pile height:	4.6mm (± 0.5mm)
Total height:	6.6mm (± 0.5mm)
Backing:	PVC
Size:	25cm*100cm
Dimensional stability:	≤0.2%
Packaging box:	20 tiles/ 5 m <sup>2</sup> , pallet 200 m <sup>2</sup>

**PERFORMANCE**

Classification:	33
Castor chair rating:	A: intensive use
Fire classification :	Bf1-S1
Soil resistance :	2-3 grade ISO11378-2: 2001
Permanent antistatic:	≤2kv AATCC134-2016
Impact sound insulation:	ΔL <sub>w</sub> :26 dB
Sound absorbtion:	Frequency Hz:125 250 500 1000 2000 4000 α <sub>s</sub> 0.01 0.05 0.08 0.22 0.34 0.44
Noise reduction:	α <sub>w</sub> :0.20
Colour fastness to light:	6 grade QB/T 2755-2005
Colour fastness to water:	4-5 grade QB/T 2755-2005
Rubbing fastness:	4-5 grade QB/T 2755-2005
Indoor air quality: (GB18587-2001 A grade)	TVOC ≤0.500mg/m <sup>2</sup> h Formaldehyde≤ 0.050mg/m <sup>2</sup> h Styrene≤ 0.400mg/m <sup>2</sup> h 4-phenylcyclohexene≤ 0.050mg/m <sup>2</sup> h

Installation method

